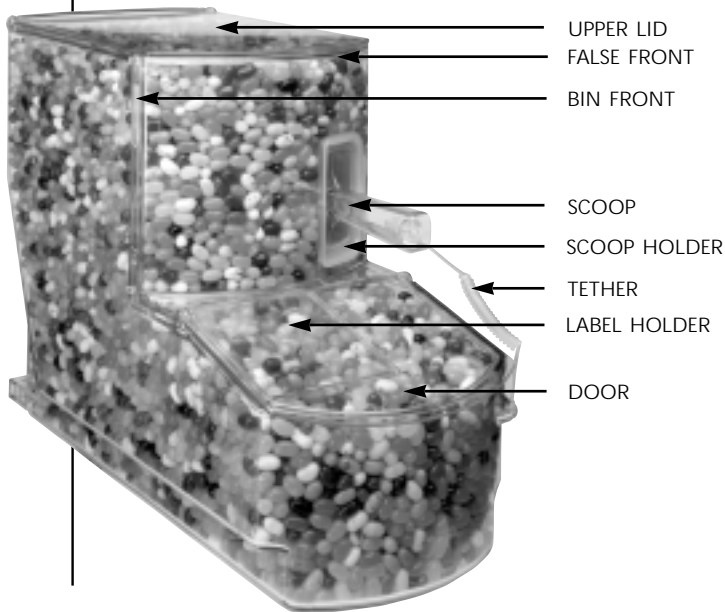


RADEUS<sup>®</sup> systems

# Scoop Bin

## ASSEMBLY INSTRUCTIONS



19 YEARS' EXPERIENCE,  
INNOVATION, LEADERSHIP  
AND SERVICE



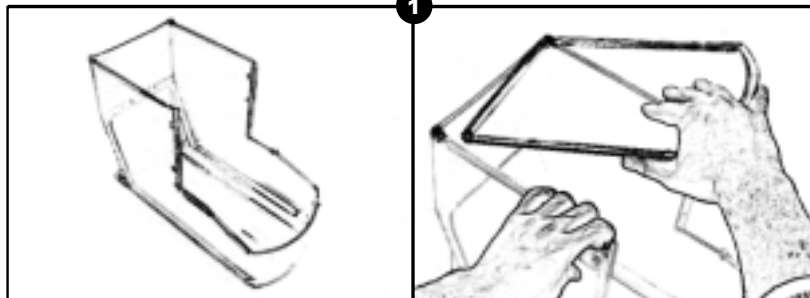
SUPPLIER OF



Put Our FREE Design Services to Work For You

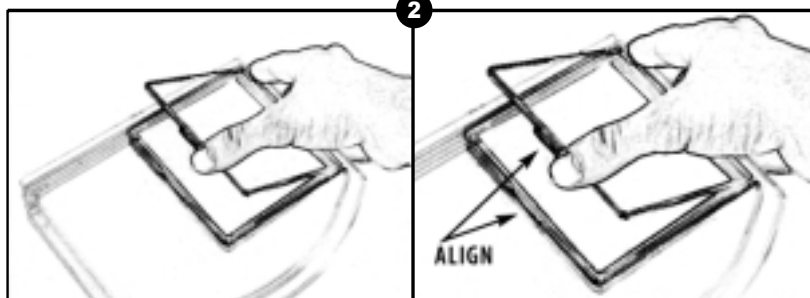
**1-800-872-3490**

1-501-664-1318 International



Snap posts on upper lid into top lugs on the bin body.

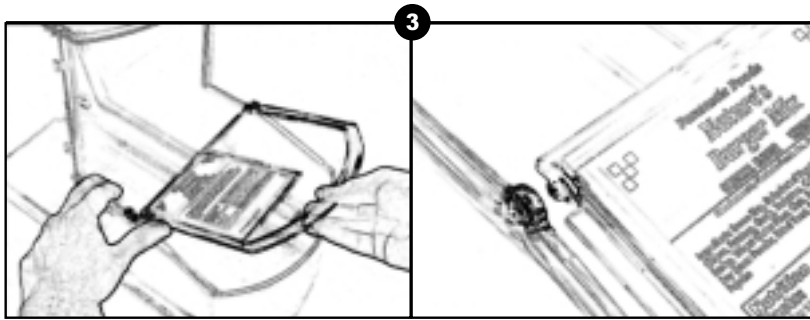
**Do not be afraid to use force for this step!** This is a tight snap fit which does require some force for both assembly and disassembly. Over the time of use this fit will slightly relax making the connection easier.



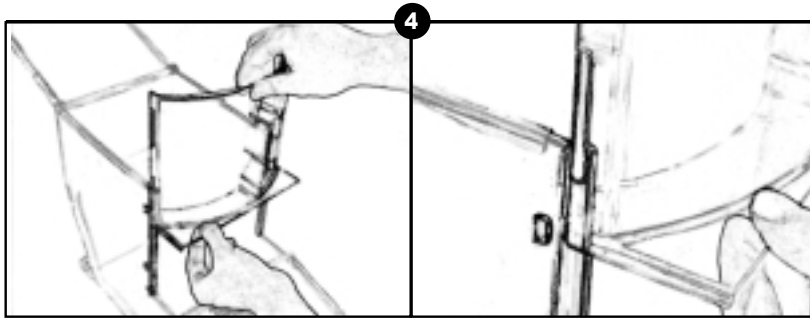
Place label card into frame on underside of the door.

Orient flat side of the label cover toward the label.

Align label cover tab with slot in frame and snap into frame.



Snap posts on door into side lugs on bin body.

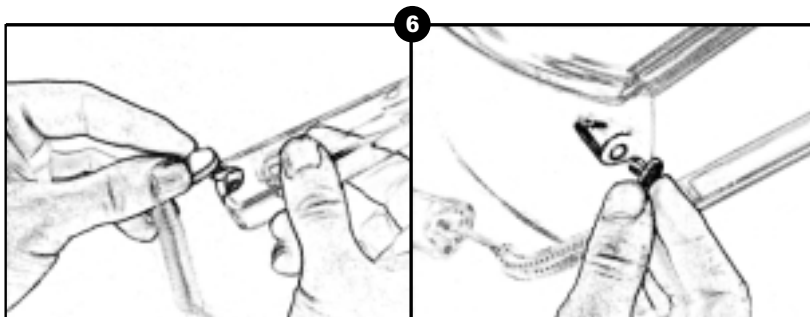


Align bin front with grooves on bin body and slide downward until firmly seated into position.



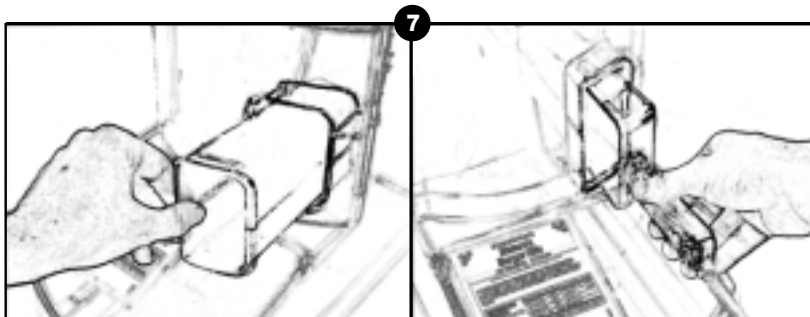
Align false front between grooves and bumps on bin sides and slide into position.

*Grooves and bumps are found on both sides of the bin.*



Snap wedge shaped tether end into handle.

Snap round shaped tether end onto bin front.



Insert scoop holder into bin front.

Insert scoop into holder.



A division of Display Technologies, LLC  
[www.display-technologies.com](http://www.display-technologies.com)

**Trade Fixtures, LLC**  
1501 Westpark Drive, Suite 5 • Little Rock, AR 72204

Sales/Customer Service 1-800-872-3490  
Main 501-664-1318 • Fax 501-664-9253 • [www.tradefixtures.com](http://www.tradefixtures.com)