



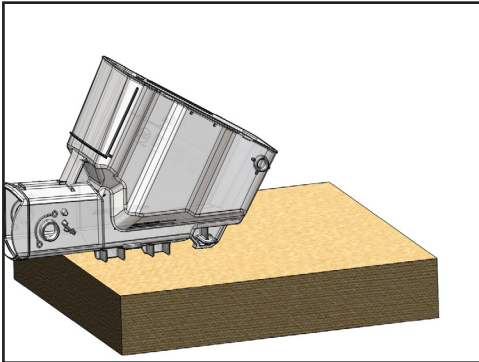
PLEASE START HERE:

Instruction Rev. 20151103:1607

If you use your own shelving, each shelf span must support, without sagging, 25 lbs (11kg) for each 3 gallon bin, 45 lbs (20kg) for each 5 gallon bin, and 150 lbs (68kg) for the 12 gallon bin (90# (40kg) rated capacity). A 48" by 12" deep metal grocery gondola shelf is typically rated to hold 500 lbs, but check with the manufacturer. If you wall mount a shelf, heavy duty brackets every 16" on center screwed to the shelf is required. If you design your own custom cabinets, contact our professional designer if you have any questions. **ALWAYS INSPECT GRAVITY BINS DAILY TO ENSURE THE BINS ARE SECURE ON THE SHELF.**

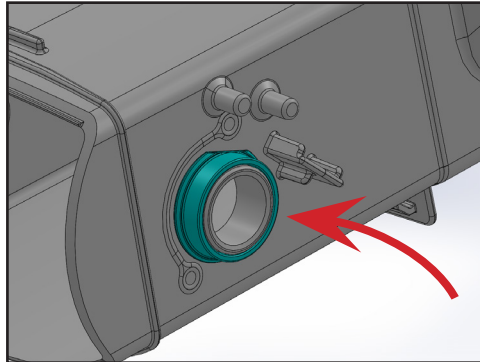
PRE-CLEAN PARTS

Visit <http://www.tradefixtures.com/cleaning> for instructions on bin and department cleaning.



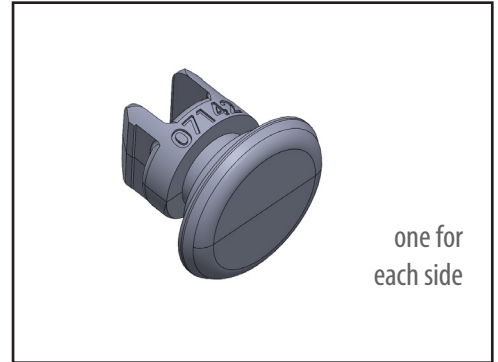
1. REST BIN BODY ON FLAT SURFACE

Locate plastic bin body of the Maximizer™
Bin and lay it on a flat surface.



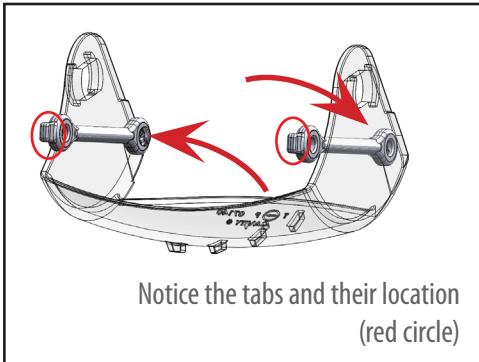
2. INSTALL BAND BUSHING

Align band bushing and snap into place onto
the neck of the bin.



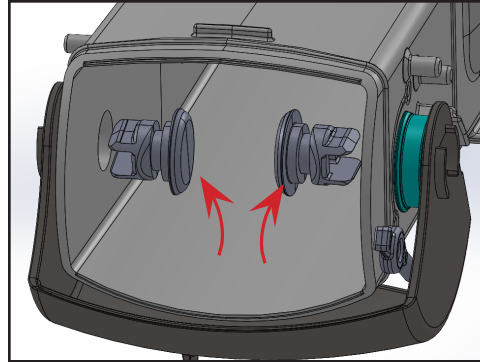
3. LOCATE HUBS

Find and locate the two hubs for step 5.



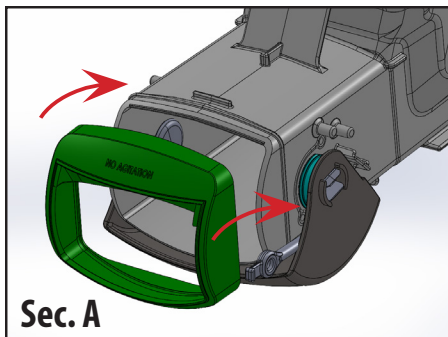
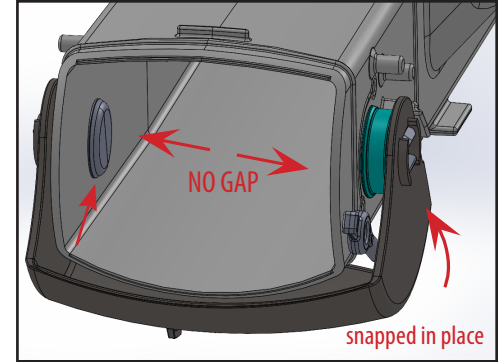
4. INSTALL DOOR RETURN BANDS

Locate the door. Align the door return band end w/out the
tab and push into place at location as shown.

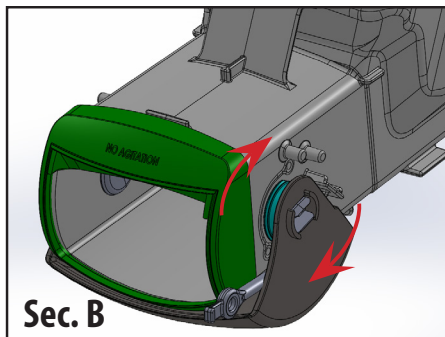


5. INSTALL DOOR AND SNAP HUBS

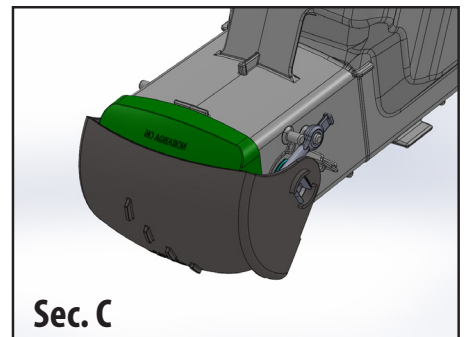
Align the door and snap hubs (from Step 3). Push the hubs from inside the door opening and snapping into the door.
You will hear them snap into place, with no gaps.



Sec. A



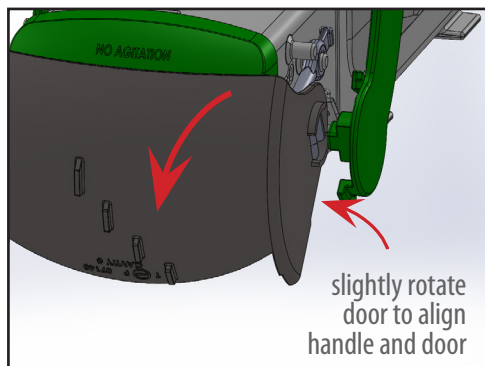
Sec. B



Sec. C

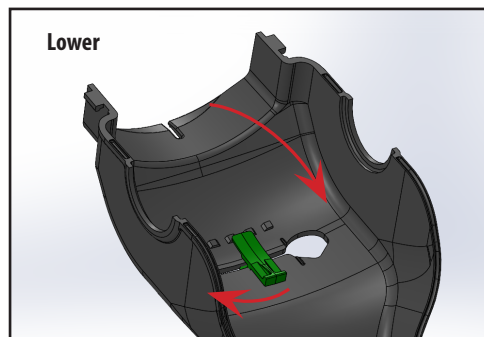
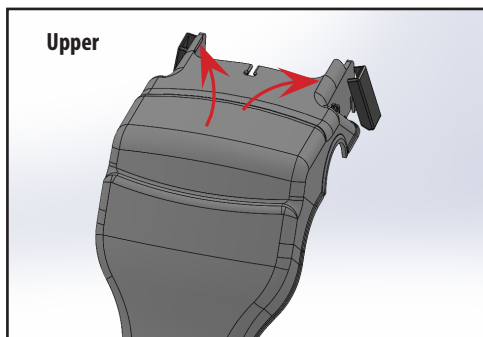
6. INSTALL DOOR GASKET AND ATTACH DOOR RETURN BANDS

With the door rotated in its widest, opened position as shown, align the spout gasket and push into place (**Sec. A**). Rotate the door while grabbing the tabbed ends of the door return bands (**Sec.B**). Align the bands and slide onto the post as shown in (**Sec. C**).



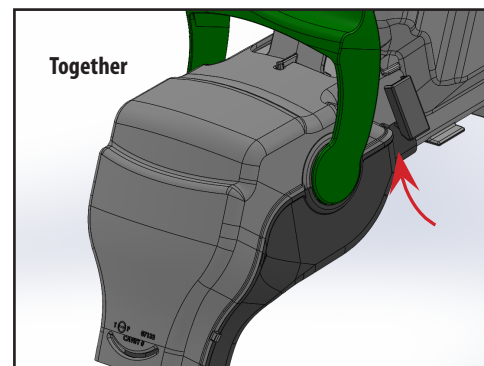
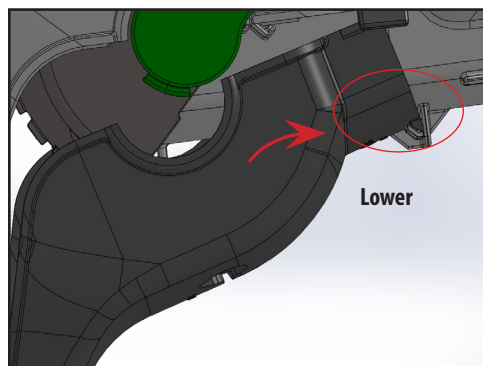
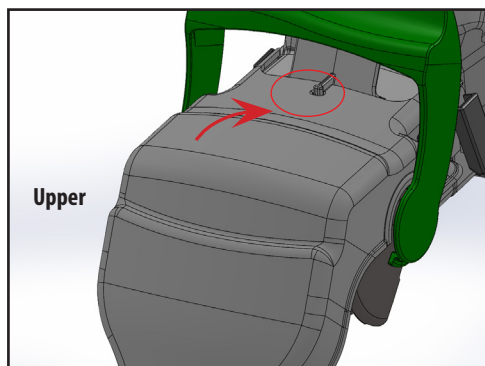
7. ATTACH HANDLE

Align handle with door and press firmly until the handle is 1/16" from door. Do this x2



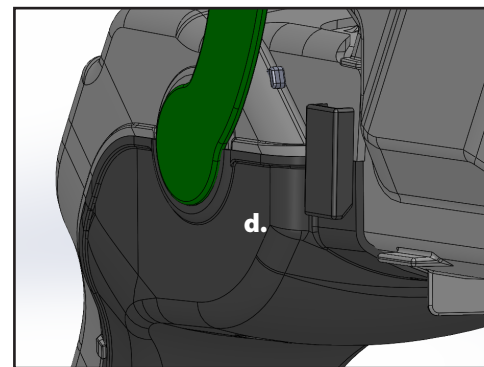
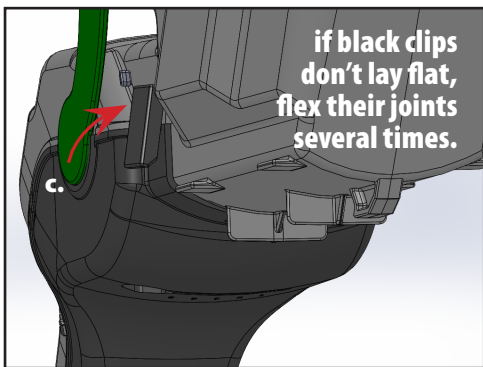
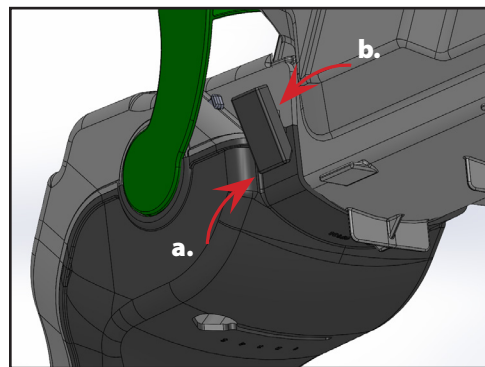
8. PREPARE FOR SPOUT ASSEMBLY

There are two pieces which snap together to form the dispensing chute of the Maximizer Bin. An upper, and lower spout with a flow control adjustment slider. Attach the two black clips on the upper spout, and insert the adjustment slider as shown into the lower.



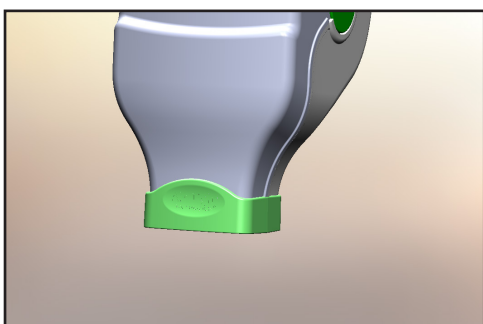
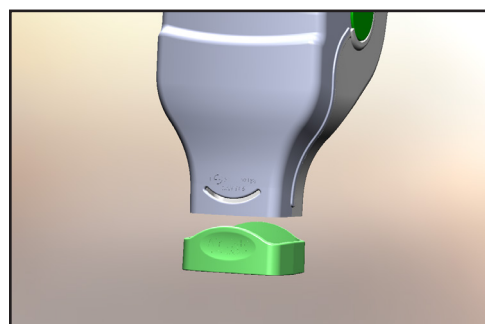
9. ASSEMBLING THE SPOUT (TO THE NECK OF THE BIN BODY)

Locate the upper and lower spouts and slide back into place as shown using the upper and lower alignment guides. Once the two pieces are together, ensure the black clip aligns with the securing tab on the lower spout.



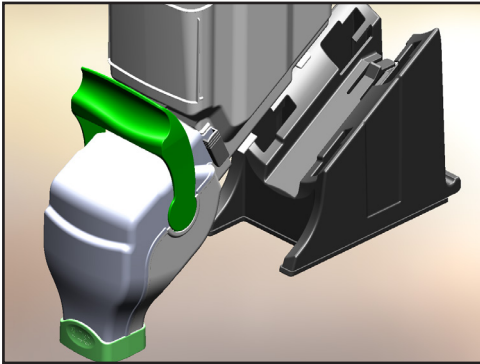
10. SECURING THE SPOUT

On each side of the bin, use the black clip to secure (lock) the spout to the bin assembly. This is done by verifying the two spout halves are aligned and latch at point **a**) while pulling the top of the clip towards you **b**) and then pushing the top of the clip back towards the bin **c**). You should feel the clip snap into place **d**).



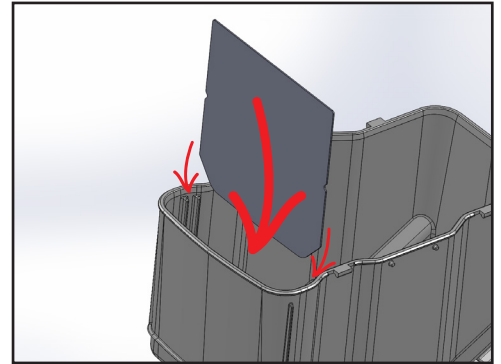
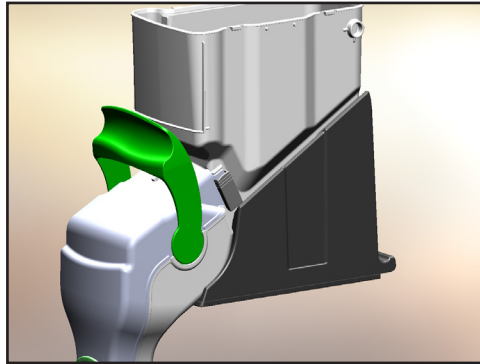
11. INSTALL THE BAG GRIP

At the bottom of the spout you will see a curved slot. Look inside of the bag grip, and slide the bag grip up and into place.



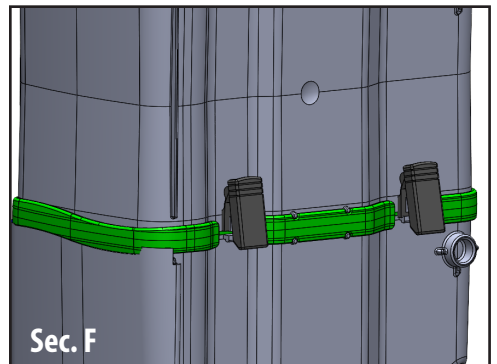
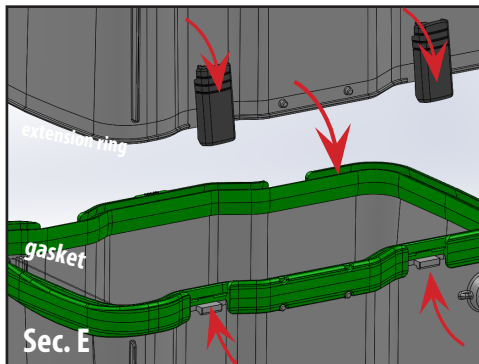
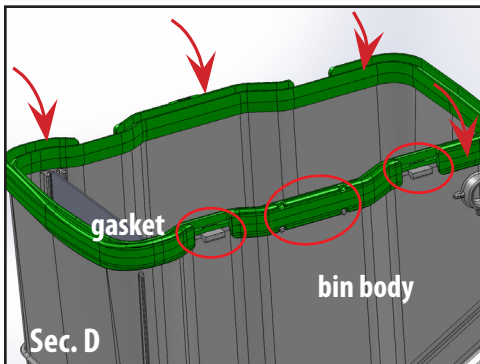
12. ATTACHING THE BASE STAND

Align the bin body with the black base stand as shown. The bin will rest and slide down into position. Once you feel or hear it lock into place, visually inspect to make sure the base stand is secure to the bin body.



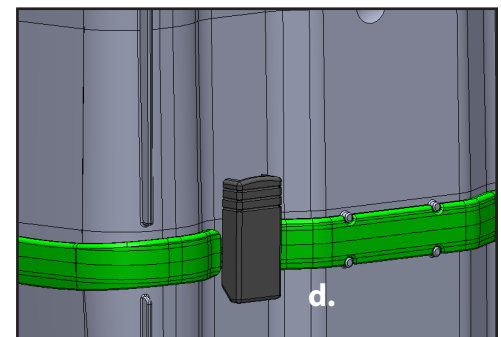
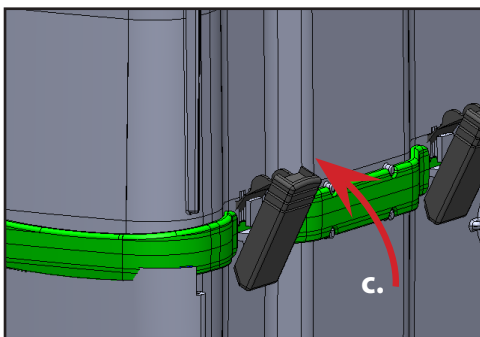
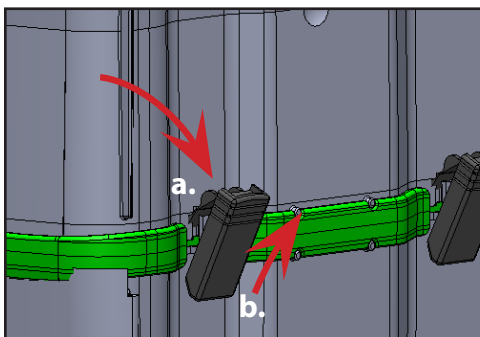
13. INSERTING THE FALSE FRONT

Align the false front piece with the grooves inside the bin body and press down into position.



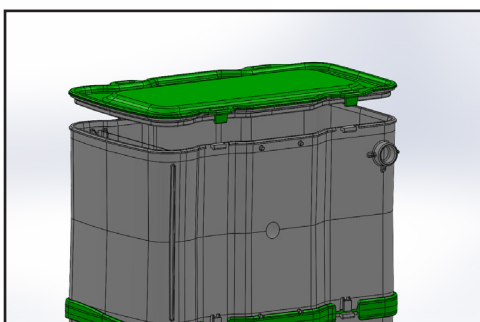
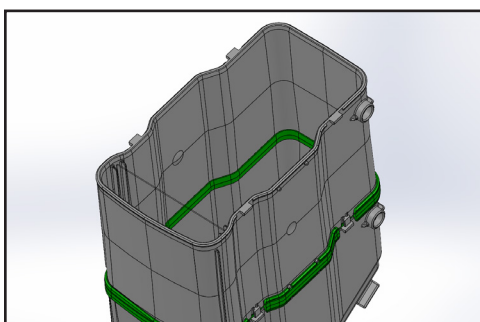
14. ATTACHING THE EXTENSION RING WITH GASKET SEAL TECHNOLOGY (GST)

Locate the extension ring gasket and install on the top of the bin body. Using the alignment guides / notches on the gasket walk the gasket down onto the bin body by pushing downward in (Sec. D). Locate the extension ring, and install the 4 black clips on the tabs as shown in (Sec. E). The extension ring rests in the gasket. Make sure the black clip aligns with the securing tab on the bin body (Sec. F).



15. SECURING THE EXTENSION RING

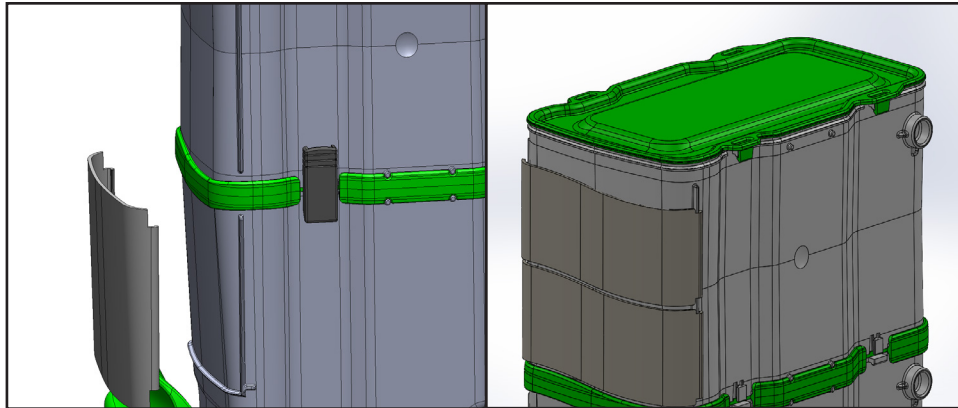
On each side of the extension ring, use the black clip to secure (lock) the ring to the bin body. This is done by verifying the ring and gasket are aligned and latch at point a.) while pulling the top of the clip towards you b.) and then pushing the top of the clip back towards the bin c.) You should feel the clip snap into place d.)



16. PUT A LID ON IT

Locate and align the lid and snap it into place by walking it around the edges.

The lid should snap into place and you can feel and hear it.



17. PLACE UPC/LABEL HOLDER ON BIN

Place the UPC / product label holder on the bin by snapping it onto the bin body.
You can also put a label on each of the expansion rings. Merchandise and sell.

